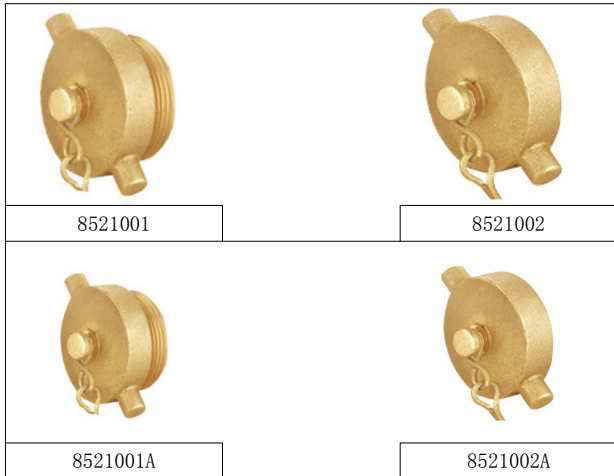


Fire protection

Plug

8521001、8521001A、8521002 and 8521002A series



Description

Forged brass plug is used to control the flow of water from the valve, turn on to allow water to flow out of the valve outlet. It is used with a fire valve or as an outlet plug of a fire valve.

Versions and product codes

Series	Size	Type	Finishing
8521001	2 1/2"	Hose thread (M)	Rough Brass Polished Brass Rough Chrome Polished Chrome
8521001A	1 1/2"	Hose thread (M)	
8521002	2 1/2"	Hose thread (F)	
8521002A	1 1/2"	Hose thread (F)	

Technical data

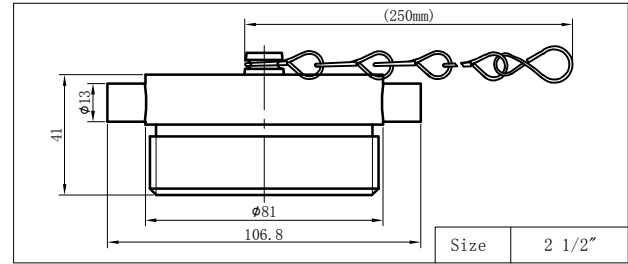
. Rated pressure: 300 PSI (20.6 bar)

Materials

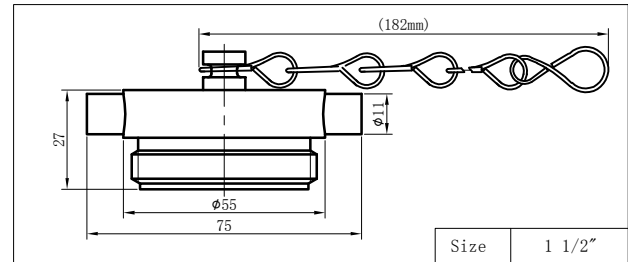
12165 CW617N, similar to American Standard ASTM B124 C37700
 -Yield stress of the material in the shape of bar: 360 MPa
 -Stress for permanent distortion R(0.2): 138 MPa
 -Elongation: 10 %
 Rated pressure 300 psi

Dimensions

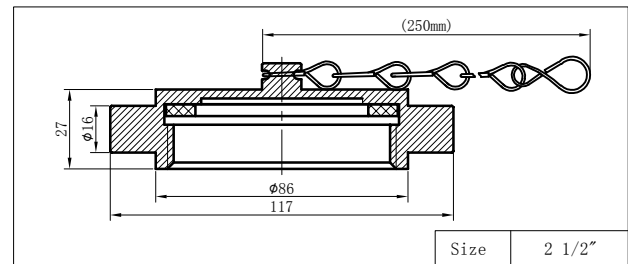
8521001-MALE HOSE THREAD



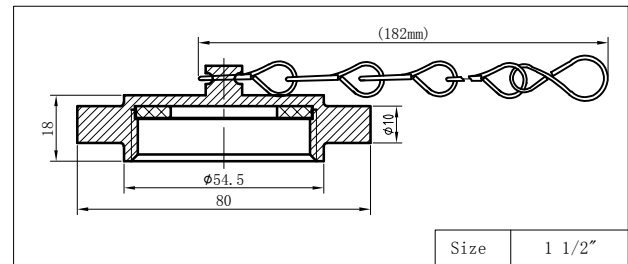
8521001A-MALE HOSE THREAD



8521002-FEMALE HOSE THREAD



8521002A-FEMALE HOSE THREAD



Product specifications

8521001 2 1/2"

The fire valve plug is used for fire valve assembly
 Main features below
 Plug is made of forging brass
 -2 1/2" Male thread
 -Pressure rating 300 PSI

8521001A 1 1/2"

The fire valve plug is used for fire valve assembly
 Main features below
 Plug is made of forging brass
 -1 1/2" Male thread
 -Pressure rating 300 PSI

8521002 2 1/2"

The fire valve plug is used for fire valve assembly
 Main features below
 Plug is made of forging brass
 -2 1/2" Female thread
 -Pressure rating 300 PSI

8521002A 1 1/2"

The fire valve plug is used for fire valve assembly
 Main features below
 Plug is made of forging brass
 1 1/2" Female thread
 Pressure rating 300 PSI